

THERMO PRE-MELTER TPM3



**ZERO SHUTDOWN TIME
ULTRA-SHORT START UP TIME
NO SCORCHING / NO WASTE
CONTINUOUS OPERATION**





THERMO PRE-MELTER TPM3

PAVEMENT MARKING EQUIPMENT

ADVANTAGES

- Extremely quick start-up/shutdown speeds
- Very efficient melting speeds
- Dual color configuration
- No burnt/charred material / soft start
- Load material at your feet
- Use of surface area whether kettle is full or nearly empty
- Very well-insulated waterproofed kettle enclosure
- Chassis Options: Isuzu FTR, Mack MD6, Peterbilt 220

SPECIFICATIONS

KETTLE SIZE: Two 1,500 lbs. (680 kg)
MELTING RATE: 1,870 lbs. (848 kg) per hour per melter
BURNER: Two 280,000 BTU
START-UP TIME: Under 1 Hour
ENGINE: PTO or Diesel Power Pack
FUEL TANK: 60 gallons (227 liters) | diesel
COOL OIL RESERVOIR: 7 gallons (26 liters) - Requires diesel power pack

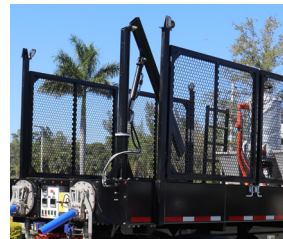
OPTIONS



MINI HOG



1,500 LB. BEAD TANK



HANDLINER LIFT CRANE



PROPANE TANK HOLDERS



REAR LIFT DECK



ARROWBOARD

THE HOG DIFFERENCE

- 98% of spare parts orders are shipped on the same day they are received, resulting in minimal downtime.
- Hog Tech University - Our New Learning Management System is the perfect place for your team members to receive certification and on-going training. Certified Operators maximize the productivity of your truck while maintaining the highest levels of safety at the lowest operating costs.
- Hog Technologies has a team of engineers and over 100 years of combined real-world experience to create the world's best solutions in every product we manufacture.
- 24/7/365 customer support is available with Certified Technicians within 10 minutes in multiple languages.

