

STRIPE HOG SK8000



**MARKING
REMOVAL**



**SURFACE
PREPARATION**



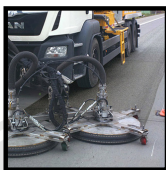
**RUNWAY
RUBBER
REMOVAL**



**CURING
COMPOUND
REMOVAL**



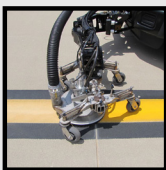
**HYDRAULIC
SPILL CLEANUP**



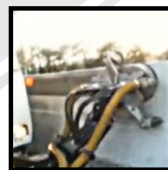
**ROAD
RETEXTURING**



**AIRPORT
APRON
CLEANING**



**PAINT
CLEANING &
REJUVENATION**



**BARRIER WALL
CLEANING**



HOG



STRIPE HOG SK8000

RUBBER AND PAINT REMOVAL

ADVANTAGES

The Stripe Hog™ SK8000 is an auxiliary-driven water blasting and recovery system designed for either asphalt or concrete roadways and airfields. The Stripe Hog SK8000 can shut down and vacate a runway in under one minute.

The SK8000 is equipped with ultra-high pressure needle-sharp water blasting jets creating up to 40,000 psi (2,750 bar) and up to 12 gpm (45.4 lpm). It uses fresh water without chemicals or detergents along with a vacuum recovery system. Our dewatering system filters the reclaimed water up to 100 micron for safe and easy disposal of the solid debris.

With large water & debris tank capacities, the SK8000 can stay on the job for several hours before dumping or replenishing water. An easy-to-use dump system and a remote-control panel in the cab make this truck a one-person operation... saving both time & money.

Our optional patented bladder tanks allow you to carry both fresh water and debris water in the same footprint allowing you to use the debris collection box for dewatered solid material only, radically increasing uptime. The Stripe Hog SK8000 has dual motors for independent RPM control of the heads.

THE HOG DIFFERENCE

- 98% of spare parts orders are shipped on the same day they are received, resulting in minimal downtime.
- Hog Tech University – Our New Learning Management System is the perfect place for your team members to receive certification and on-going training. Certified Operators maximize the productivity of your truck while maintaining the highest levels of safety at the lowest operating costs.
- Hog Technologies has a team of engineers and over 100 years of combined real-world experience to create the world's best solutions in every product we manufacture.
- 24/7/365 customer support is available with Certified Technicians within 10 minutes in multiple languages.

SPECIFICATIONS

OPERATING PRESSURE: 40,000 PSI (2,750 BAR)

FLOW RATE: 12 GPM (45.5 LPM)

BLASTING WIDTHS: 6"–48" (15.2–121.92 cm)

WATER CAPACITY: 3,150 gallons (11,924 liters)

DEBRIS CAPACITY: 1,800 gallons (6,813 liters), 4,950 gallons (18,737 liters) with optional bladder bags.

VACUUM: 6" @ 1,400 CFM or 8" @ 2,350 CFM

RUBBER REMOVAL RATE: 40,000 sq. ft/hr (3,716 m²/hr)

MARKING REMOVAL RATE: 6,500 linear ft/hr (1,981 linear meters/hr)

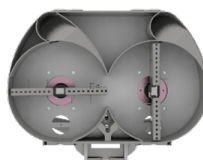
OPTIONS



HIGH DUMP



GROUND HOG



24" TWIN HEAD



36"/48" TRIPLE HEAD



BLADDER TANKS



HOG TRACKS

