

TECHNOLOGIES

# STRIPE HOG SK7500



**MARKING  
REMOVAL**



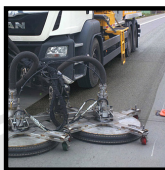
**SURFACE  
PREPARATION**



**RUNWAY  
RUBBER  
REMOVAL**



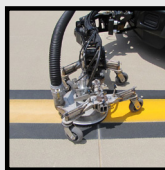
**CURING  
COMPOUND  
REMOVAL**



**ROAD  
RETEXTURING**



**AIRPORT  
APRON  
CLEANING**



**PAINT  
CLEANING &  
REJUVENATION**



**HYDRAULIC  
SPILL CLEANUP**



# HOG



# STRIPE HOG SK7500

RUBBER AND PAINT REMOVAL

## ADVANTAGES

The Stripe Hog™ SK7500 is an auxiliary engine-driven water blasting and recovery system designed for either asphalt or concrete roadways and airfields. The Stripe Hog SK7500 can prepare to vacate the runway in under 1 minute.

The SK7500 is equipped with ultra-high pressure needle sharp water blasting jets creating up to 40,000 psi (2,750 bar) and your choice of a 7.8 GPM (29.5 LPM) or 9.8 gpm (37 lpm) pump. It uses ordinary fresh water without chemicals or detergents, along with a vacuum recovery system. Separating water from solids, it processes the reclaimed water for safe and easy disposal of the solid debris.

With a large water and debris tank capacity the SK7500 can stay on the job for several hours before dumping or replenishing with fresh water. An easy-to-use dump system and a remote-control panel in the cab make this truck a one-person operation...saving both time and money.

Our dewatering system filters the reclaimed water up to 100 micron for safe and easy disposal of the solid debris.

Our patented bladder tanks allow you to carry both fresh water and debris water in the same footprint allowing you to use the debris collection box for dewatered solid material only, radically increasing up time.

## THE HOG DIFFERENCE

- 98% of spare parts orders are shipped on the same day they are received, resulting in minimal downtime.
- Hog Tech University - Our New Learning Management System is the perfect place for your team members to receive certification and on-going training. Certified Operators maximize the productivity of your truck while maintaining the highest levels of safety at the lowest operating costs.
- Hog Technologies has a team of engineers and over 100 years of combined real-world experience to create the world's best solutions in every product we manufacture.
- 24/7/365 customer support is available with Certified Technicians within 10 minutes in multiple languages.

## SPECIFICATIONS

**OPERATING PRESSURE:** 40,000 PSI (2,750 BAR)

**FLOW RATE:** 7.8 GPM (29.5 LPM) or 9.8 GPM (37 LPM)

**BLASTING WIDTHS:** 6"-24" (15.2-60.96 cm) Standard as a single head

**WATER CAPACITY:** 1,200 gallons (4,542 liters)

**DEBRIS CAPACITY:** 750 gallons (2,839 liters), 1,950 gallons with optional bladder bags.

**VACUUM:** 4" @ 750 CFM (7.8 GPM Pump) or 6" 1,400 CFM (9.8 GPM Pump)

**RUBBER REMOVAL RATE:** 30,000 sq. ft/hr (2,787 m<sup>2</sup>/hr)

**MARKING REMOVAL RATE:** 5,557 linear ft/hr (1,693 linear meters/hr)

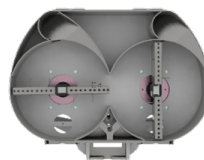
## OPTIONS



HOG RIDER



GROUND HOG



24" TWIN HEAD



36"/48" TRIPLE HEAD



BLADDER TANKS

