

# STRIPE HOG SK2000



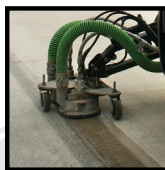
**MARKING  
REMOVAL**



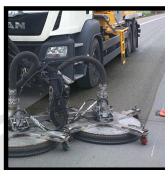
**SURFACE  
PREPARATION**



**RUNWAY  
RUBBER  
REMOVAL**



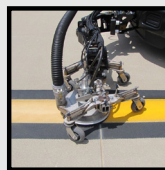
**CURING  
COMPOUND  
REMOVAL**



**ROAD  
RETEXTURING**



**AIRPORT  
APRON  
CLEANING**



**PAINT  
CLEANING &  
REJUVENATION**



**HYDRAULIC  
SPILL CLEANUP**



# HOG





# STRIPE HOG SK2000 TRAILER

RUBBER AND PAINT REMOVAL

## ADVANTAGES

The Stripe Hog™ SK2000 Trailer is an auxiliary engine-driven, trailer-mounted water blasting and recovery system designed for parking garages and roadway marking removal such as paint, thermoplastic, curing compound and paint rejuvenation. The SK2000 Trailer can be hitched via a conventional method or through a gooseneck method.

The SK2000 Trailer comes with the HT1000 Ground Hog walk-behind tool.

Our dewatering system filters the reclaimed water up to 100 micron for safe and easy disposal of the solid debris.

Our patented bladder tanks allow you to carry both fresh water and debris water in the same footprint allowing you to use the debris collection box for dewatered solid material only, radically increasing up time.

### Coventional

- Tighter turning radius
- More maneuverable
- Tongue Weight: 4,000 lbs (1,814 kg)
- Gross Trailer Weight: 13,000 lbs (5,896 kg)
- Call for chassis consultation

### Gooseneck

- Reduces tongue weight
- Less expensive chassis
- Gross Trailer Weight: 13,500 lbs (6,123 kg)
- Call for chassis consultation

## THE HOG DIFFERENCE

- 98% of spare parts orders are shipped on the same day they are received, resulting in minimal downtime.
- Hog Tech University - Our New Learning Management System is the perfect place for your team members to receive certification and on-going training. Certified Operators maximize the productivity of your truck while maintaining the highest levels of safety at the lowest operating costs.
- Hog Technologies has a team of engineers and over 100 years of combined real-world experience to create the world's best solutions in every product we manufacture.
- 24/7/365 customer support is available with Certified Technicians within 10 minutes in multiple languages.

## SPECIFICATIONS

**OPERATING PRESSURE:** 40,000 PSI (2,750 BAR)

**FLOW RATE:** 5.6 GPM (21.2 LPM)

**BLASTING WIDTHS:** 6"-14" (15.2-35.5 cm) Standard as a single head

**WATER CAPACITY:** 600 gallons (2,271 liters)

**DEBRIS CAPACITY:** 750 gallons (2,839 liters)

## OPTIONS



### HOG RIDER



GOOSENECK HITCH



LOW PROFILE WHEELS

