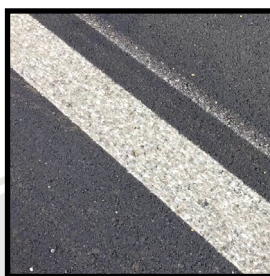


# GRINDER HOG GH2



**GRINDING**



**GROOVING**



**REFLECTOR CUT**





# GRINDER HOG GH2

GRINDING, GROOVING, RUMBLING

## ADVANTAGES

The Grinder Hog GH2 features a grinder head on each side of the truck that is capable of extending outward up to 13" from the chassis with a head extension option extend up to 36". The grinder head supports a variety of PCD grinding teeth for different finish profiles.

The Grinder Hog GH2 does **not** require a CDL license to operate.

With our Low-Speed Control, the Grinder Hog GH2 can grind at speeds up to 6 MPH without having to check between the crosshairs and the speedometer, greatly reducing the margin for error.

The Grinder Hog GH2 comes with a computer controlled profiling (or CCP) package for on-the-fly adjustment of your skip line or recessed reflective pattern.

The simultaneous vacuum recovery system of the Grinder Hog GH2 utilizes a 2,200 CFM positive displacement blower coupled with our latest noise reduction technology. The debris is collected in a 4 cubic yard usable debris tank that dumps to the rear.

## THE HOG DIFFERENCE

- 98% of spare parts orders are shipped on the same day they are received, resulting in minimal downtime.
- Hog Tech University - Our New Learning Management System is the perfect place for your team members to receive certification and on-going training. Certified Operators maximize the productivity of your truck while maintaining the highest levels of safety at the lowest operating costs.
- Hog Technologies has a team of engineers and over 100 years of combined real-world experience to create the world's best solutions in every product we manufacture.
- 24/7/365 customer support is available with Certified Technicians within 10 minutes in multiple languages.

## SPECIFICATIONS

**GRINDING HEADS:** 2

**CUTTING WIDTHS:** Up to 13" (33 cm) Standard

**HEAD EXTENSION:** Up to 36" (91.44 cm) away from chassis

**VACUUM:** 1x 2,200 CFM 8" Blower

**FILTER:** 141 ft<sup>2</sup> (13 m<sup>2</sup>) of 10 micron

**DEBRIS CAPACITY:** 4 cubic yards (usable)

**LOW SPEED CONTROL:** Up to 6 MPH (9.6 KM/H)

### CUTTING TEETH OPTIONS:



FLAT



ROUND  
(FLAT & DOMED)



DOUBLE ROUND  
(DOMED ONLY)



TRIPLE ROUND  
(FLAT ONLY)

## OPTIONS



18" CUTTER DRUM

